

Phase 2 – Preferred Alternative

Route 11/460 (West Main Street) at Dow Hollow Road – Peanut Roundabout



Project Description

A Peanut Roundabout is proposed that will reconfigure the Dow Hollow Road and Fallbrooke Drive intersections along Route 11/460 to replace the two existing stop-controlled intersections.

Project Needs

The preferred alternative addresses VTrans needs relating to safety improvements and capacity preservation.

Needs and Priorities

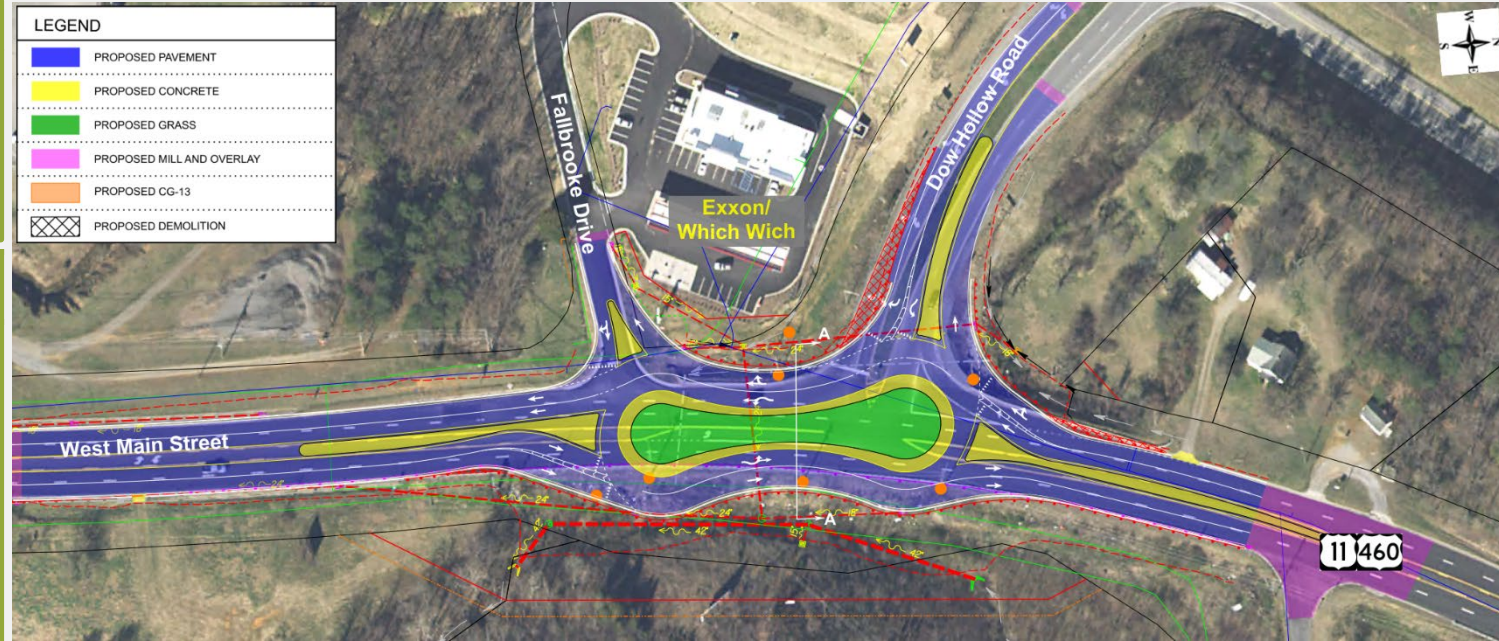
| | | | |
|----------------------------------|-----------|-------------------|-----|
| Safety Improvement | Very High | Bicycle Access | Low |
| Capacity Preservation | High | Transit Access | Low |
| Transportation Demand Management | Low | IEDA (UDA) Access | Low |

Project Benefits

The preferred alternative provides the following benefits:

- Reduces traffic congestion and will accommodate traffic during I-81 detour incidents
- Reduces the potential for crashes at both the Dow Hollow Road and Fallbrooke Drive intersections along Route 11/460 by 82%.
- Increases corridor safety

| LEGEND | |
|--------|---------------------------|
| | PROPOSED PAVEMENT |
| | PROPOSED CONCRETE |
| | PROPOSED GRASS |
| | PROPOSED MILL AND OVERLAY |
| | PROPOSED CG-13 |
| | PROPOSED DEMOLITION |



Public Input Survey Summary

- Public Input survey was conducted from February 28 – March 13, 2024, and included 487 participants and 448 comments
- The Peanut Roundabout received an average rating of 3.1 from respondents (1= Strongly Oppose, 5= Strongly Support)
- Many respondents expressed their support for the roundabout and their concerns regarding existing safety deficiencies at the intersection

Dow Hollow Road Roundabout

