

EISENHOWER AVENUE FROM VAN DORN STREET TO METRO ROAD

Separated Bike Path Alternative



Separated Bike Path Sketch



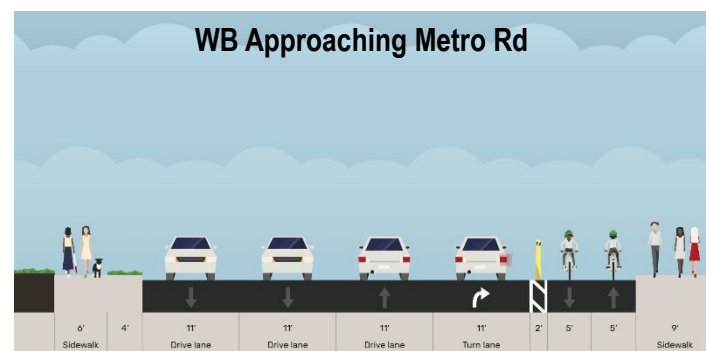
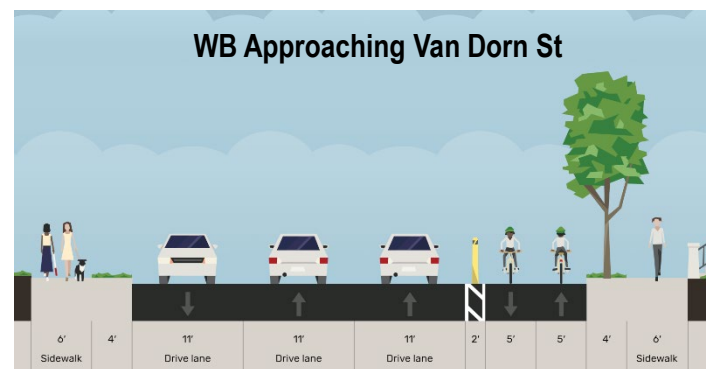
Improvements Description

The improvements proposed at this location include:

- New sidewalk on south side
- Two-way separated bike path on north side
- Reduction of conflict by shifting left turns from Van Dorn St and Eisenhower Ave to the interchange ramps on Metro Rd

These improvements are expected to provide increased safety for pedestrians, reduce conflicts between turning vehicles, and reduce speeding along the corridor. The separated two-way bike path on the north side of Eisenhower Ave would provide a route for bikes without conflicting with pedestrians, and the sidewalk on the south side would provide connections to public transit by providing ADA compliant access along a desire path through grass.

Cross Sections



Project Location



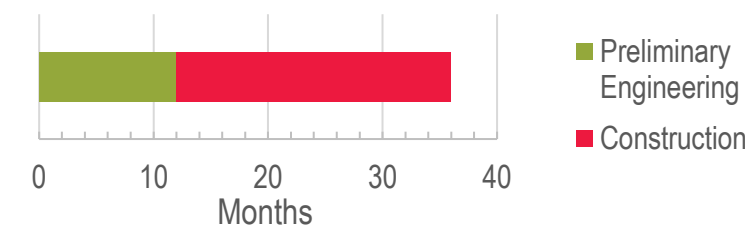
Traffic Operations Results

Eisenhower Ave at Van Dorn St (Delay per Vehicle in Seconds)

	AM Peak	PM Peak
No-Build (2035)	81.8	63.1
Build (2035)	35.3	35.5
No-Build (2045)	93.3	70.6
Build (2045)	40.1	38.2

Project Schedule & Updated Preliminary Cost

Project schedules and cost estimates were developed based on information available at the time of study and should be reassessed prior to submitting funding applications.



Phase	Cost Estimate (2024 Dollars)
Preliminary Engineering	\$2,381,600
Construction	\$16,469,106
Total Cost	\$18,850,706