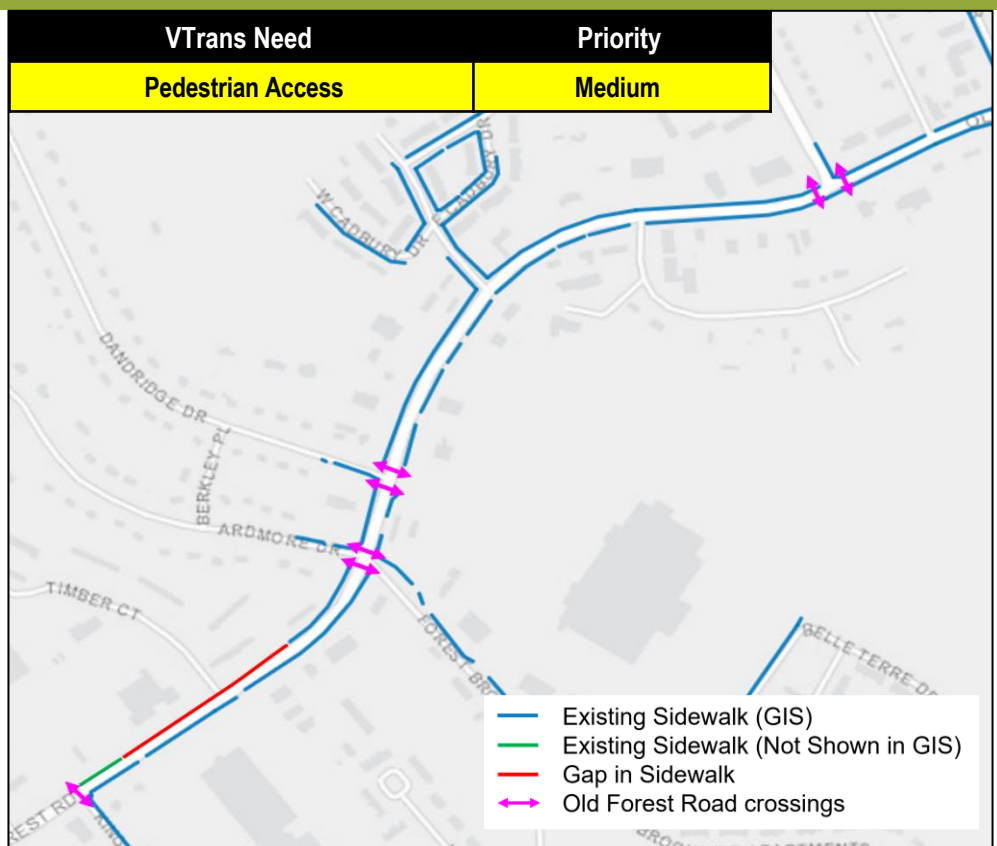
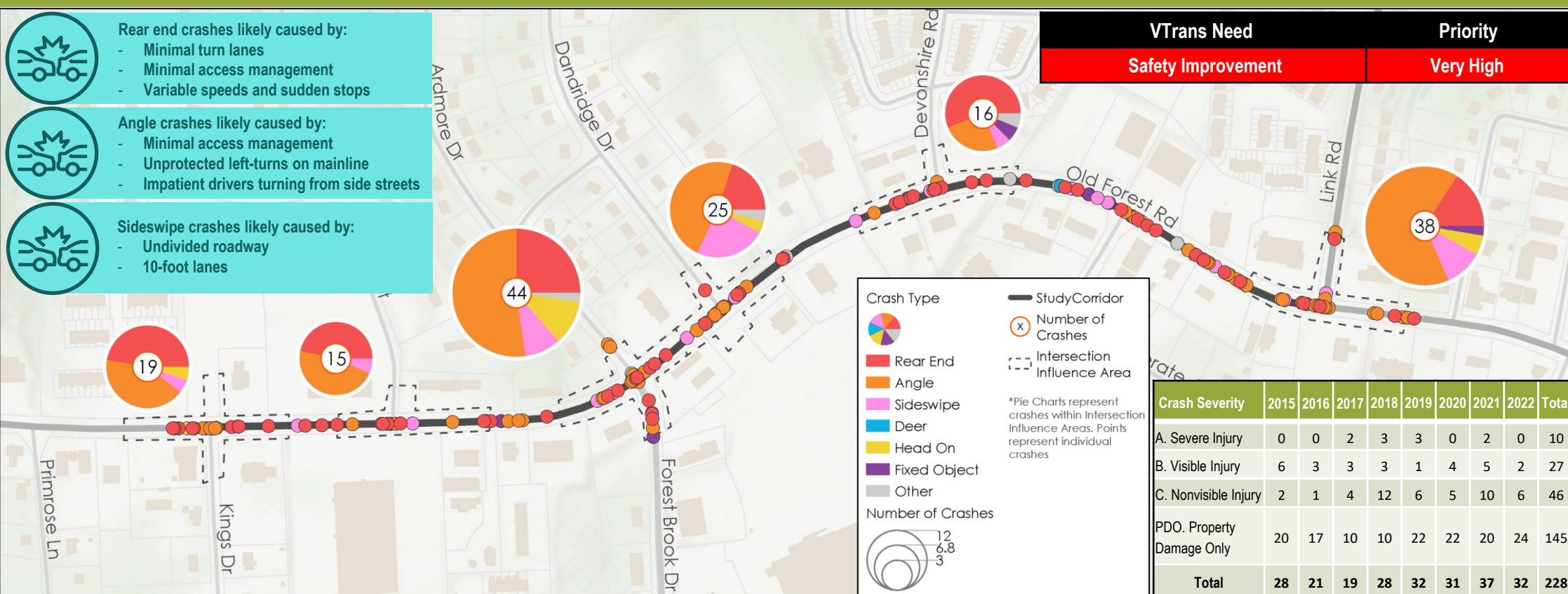




DIAGNOSIS AND PROBLEM IDENTIFICATION

VTrans Needs Evaluation and Preliminary Alternatives



Preliminary Alternatives Carried Forward to Phase 2:

- 1 Restrict left turns out of Timber Court and provide a westbound U-turn at Primrose Lane with a loon and potential 2-phase traffic signal to accommodate U-turning vehicles.
- 2 Install a crosswalk on the northwest leg (YMCA entrance) of the intersection along with pedestrian signal equipment. Fill in sidewalk gaps on Old Forest east of King Street. Ensure bus stop near King Street is accessible.
- 3 Construct an exclusive eastbound right-turn at the Forest Brook intersection.
- 4 Construct a channelized east right-turn and/or roundabout at the Dandridge Drive intersection.
- 5 Investigate potential for mid-block pedestrian crossing (may require Pedestrian Hybrid Beacon)

Corridor is served by GLTC

